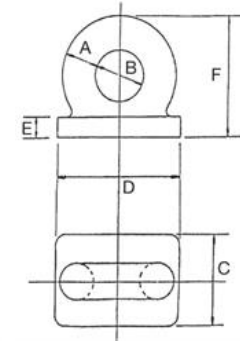
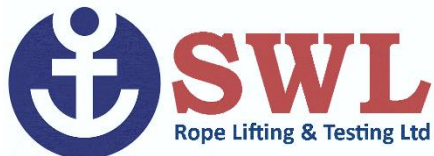


Deck Plates

- High tensile C1045.
- Self-colour finish
- Based upon the Admiralty Pattern.
- W.L.L dependent on current welding procedures being carried out.
- Marked with CE, size, proof load and ID mark.



| Proof Load | A | B | C | D | E | F | Weight |
|------------|---------------|------|------|------|------|------|--------|
| (tonnes) | | (mm) | (mm) | (mm) | (mm) | (mm) | (kgs) |
| 2 | 3/8" (10mm) | 20 | 25 | 45 | 6 | 38 | 0.14 |
| 3.5 | 1/2" (12.5mm) | 25 | 35 | 60 | 8 | 50 | 0.31 |
| 5.5 | 5/8" (16mm) | 32 | 45 | 70 | 10 | 64 | 0.45 |
| 7.5 | 3/4" (19mm) | 33 | 50 | 85 | 12 | 76 | 0.79 |
| 9.6 | 7/8" (22mm) | 44 | 61 | 102 | 12 | 88 | 1.36 |
| 13 | 1" (25mm) | 50 | 70 | 115 | 16 | 100 | 1.82 |
| 15.75 | 1.1/8" (28mm) | 56 | 76 | 130 | 18 | 114 | 2.95 |
| 20 | 1.1/4" (32mm) | 64 | 85 | 145 | 19 | 128 | 3.86 |
| 29 | 1.1/2" (38mm) | 76 | 100 | 170 | 22 | 152 | 6.58 |
| 38.25 | 1.3/4" (44mm) | 89 | 121 | 200 | 27 | 178 | 18 |
| 50 | 2" (50mm) | 102 | 137 | 229 | 30 | 203 | 25 |



SWL Rope Lifting & Testing, 65-69 Bernard Street, Southampton Hampshire, SO14 3BA

Telephone: 02380 338286

Email: sales@swl.org.uk