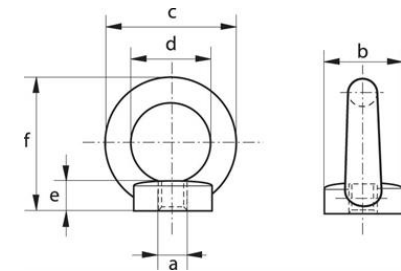
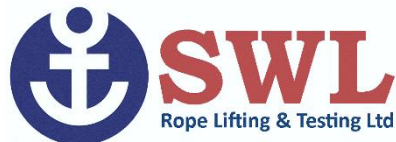


Eyenuits meet the WLL requirements of DIN 582

- Material: Mild steel C15.
- Meet the WLL requirements of DIN 582.
- Self-coloured and electro galvanised finish.
- Marked with size, WLL, C15, ID mark, CE.
- Supplied with an EC declaration of conformity.



| W.L.L tonnes | A (mm) | B (mm) | C (mm) | D (mm) | E (mm) | F (mm) | Weight (kgs/each) |
|-----------------|--------|--------|--------|--------|--------|--------|----------------------|
| 0.07 | M 6 | 20 | 36 | 20 | 8.5 | 36 | 4.2 |
| 0.14 | M 8 | 20 | 36 | 20 | 8.5 | 36 | 5.2 |
| 0.23 | M 10 | 25 | 45 | 25 | 10 | 45 | 9.4 |
| 0.34 | M 12 | 30 | 54 | 30 | 11 | 53 | 16 |
| 0.49 | M 14 | 35 | 63 | 35 | 13 | 60 | 22 |
| 0.7 | M 16 | 35 | 63 | 35 | 13 | 62 | 24 |
| 1.2 | M 20 | 40 | 72 | 40 | 16 | 71 | 35.2 |
| 1.5 | M 22 | 45 | 81 | 45 | 18 | 80 | 58.6 |
| 1.8 | M 24 | 50 | 90 | 50 | 20 | 90 | 70.6 |
| 2.5 | M 27 | 50 | 90 | 50 | 20 | 90 | 102 |
| 3.2 | M 30 | 65 | 108 | 60 | 25 | 109 | 132 |
| 4.3 | M 33 | 65 | 108 | 60 | 25 | 110 | 170 |
| 4.6 | M 36 | 75 | 126 | 70 | 30 | 128 | 208 |
| 6.1 | M 39 | 75 | 126 | 70 | 30 | 130 | 260 |
| 6.3 | M 42 | 85 | 144 | 80 | 35 | 147 | 311 |
| 8 | M 45 | 85 | 144 | 80 | 35 | 150 | 407 |
| 8.6 | M 48 | 100 | 166 | 90 | 40 | 168 | 502 |
| 11.5 | M 56 | 110 | 184 | 100 | 45 | 187 | 669 |
| 16 | M 64 | 120 | 206 | 110 | 50 | 208 | 930 |



SWL Rope Lifting & Testing, 65-69 Bernard Street, Southampton Hampshire, SO14 3BA

Telephone: 02380 338286

Email: sales@swl.org.uk