



SWL
Rope Lifting & Testing Ltd



LLOYDS BEAL
Site Services Ltd



LLOYDS
Ship Safety Services Ltd

About Us

The group was formed in 2008 due to the merger of two independent businesses. We have grown considerably since then and with the acquisition of Lloyds Beal Ltd, we can trace our history right back to 1815.

We strive to offer our customers value for money, exceptional service and peace of mind that the services and products supplied by us keep their business's running efficiently and above all compliant with current legislation.



Contents

| | |
|-----------------------------------|-----------|
| Motion Inspect | 3 |
| Marine Division | 4 |
| Defence Division | 5 |
| Aviation Solutions | 6 |
| Life Saving Appliances | 7 |
| Force Measurement Equipment | 8 |
| Inspection / Testing (LOLER 1998) | 9 |
| Mooring Ropes | 10 |
| Crane Maintenance | 11 |
| Height Safety | 12 |
| Design and Manufacture | 13 |
| Industrial Racking | 14 |
| Industrial Doors | 15 |
| Wire Rope | 16 |
| Product Sales | 17 |
| Hire | 18 |
| Training | 19 |
| Locations | back page |



| | |
|------------------|--|
| Username: | |
| Password: | |

Our software is one of the market leaders and the system has been carefully designed to capture accurate inspections, improve processes and allow report data to flow seamlessly between inspectors, administrators and you, the customer. We believe that Motion Software can play an integral part in the delivery of the best possible service to you. We recognise that swift, accurate inspection data is a vital business requirement and our software allows you to capture information on the spot as your inspections are carried out. By enhancing and automating the inspection process- which has typically always been paper based- we enable increased efficiency by capturing data on-site and removing all manual processes.

Motion Software gives our clients instant access to view reports, defects and inspection history of all types of equipment. As an addition our online web portal can be used by clients to:

- Download reports - Print, save and send
- View equipment and trace inspection history
- Option to view inspection results graphically
- The defect tracker gives an overview of all outstanding defects
- Reporting on overdue and upcoming inspections can be easily identified
- Graphical Interface- a picture says a thousand words
- Visual representation of the data allows you to visually identify where failures are
- Provide a guide for inspectors to identify item location
- Works with P & ID drawing and general graphics/photographs etc.
- Traffic light system gives clear identification of fit for use/ defective
- Equipment registers for various sites



SWL

Rope Climbing & Training Ltd

Home

Log Out

Southampton Branch: Equipment Register

Defect Tracker

Documents

Equipment Register

Site Reports

Customer

Lloyds Beal Site Services

Customer Site

Southampton Branch

▼ Site Summary Search ▼

Active Equipment

13

Exams

1

Items Not Located

1

Open Defects

1

Overdue Tests

0

Observations

0

Equipment Out of Service

0

Scrapped

0

Scrapped (ROTE)

0

Archived

0

Removed (defect)

0

▼ Find Equipment ▼

Equipment No.

ID028

Description

Notes

Main Location

Sub Location

Detailed Location

Category

Status

Active Status

Active

Equipment Type

Filter

Reset

1 items found.

| Status | Equipment No. | Description | Location | Exam Type | Exam Status | Exam Date | Exam No. | Exam Doc | Test Date | Test No | Test Doc | Next Exam Due | Next Test Due | Test Due Status |
|-------------|---------------|-----------------------------|----------------------|----------------------|-----------------------------------|------------|-----------|-------------|-----------|---------|----------|---------------|---------------|-----------------|
| <div></div> | ID028 | Green Screw Pin Bow Shackle | Workshop / General / | Thorough Examination | Fit for use at time of inspection | 18/05/2015 | ABZ-1-1/E | <div></div> | | | | 18/11/2015 | | |

1 items found.



LOLER 2006 (Lifting Operations and Lifting Equipment Regulations 2006)

These regulations are applied under the Statutory Instrument No. 2186 and were an adoption of harmonised EU Regulations. The Rules cover any UK Flagged vessel and any other, irrespective of Flag State, that operate or trade within UK Waters, and are enforced by the MCA under MGN 332 (M&F).

These rules also cover Floating Cranes under a memorandum of understanding between the UK HSE and MCA.

SWL have a wealth of experience in the understanding and operation of these rules, and can ensure that our clients remain compliant using our 'Lifting Equipment Management System' that all inspection, testing and electronic record keeping acceptable by MCA, is current and up to date.

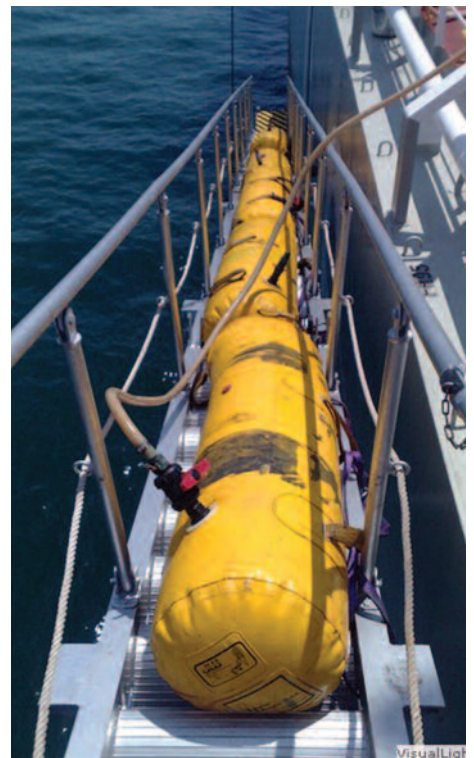
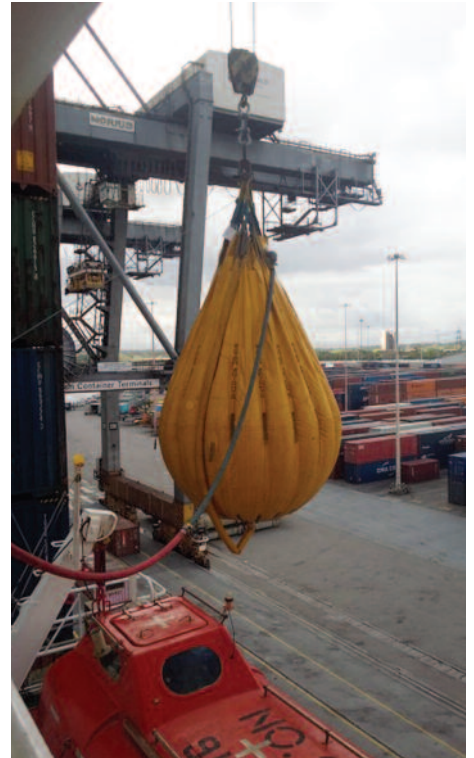
We are capable of covering many types of vessels and operators including RO RO's, Bulk/General Cargo to Specialist Research Ships and Training Organisations. To ensure our client's requirements for the five yearly testing and annual inspection of their fleet's lifting equipment are met.

The Marine Division can also provide you with a 'riding squad' of engineers, who are flexible to travel locally in the UK or Worldwide, to carry out this important work on board with minimum disruption to your operational activities.

We include within our Lifting Equipment Management System the Inspection and Testing of Gangways and Accommodation Ladders in accordance with International Maritime Organisation MSC.1/circ 1331.

SWL can also carry out testing of Mooring Winches, Capstans, Brake Render tests and Bollard Pulls.

SWL have the capability to supply and replace Crane Wires to any size or construction, test ships heavy lifting equipment such as Pedestal, Hiab, Knuckle, Gantry Cranes, 'A' frames, Tugger and Towing Winches.



SWL Rope Lifting & Testing Limited '**Defence Division**' has an office and stores area within HM Naval Base Portsmouth. This division has the capability to respond to the customer needs quickly and effectively.

We are the preferred supplier within the Naval Base to deliver the '**Rope, Rigging, Chandlery, Lifting and Handling**' contract over the next three years, and together with our client, BAE, we aim to deliver a quality service, with innovation to improve systems of work, but also costs savings over this period for the Royal Navy.

We also provide services to various MOD establishments across the region, not only in our core works of testing/inspection and maintenance of lifting equipment, but also to diverse items such as Height Safety Systems to repair of Physical Training Courses.

SWL have the ability to manufacture or supply:

- Rope and Wire
- SRBF Blocks
- General Rigging
- NATO Stock Number Items or Assemblies
- Chain, Cable and Associated Equipment
- Sail Making
- Life Lines
- Fenders
- Fabrication Design Service in Mild Steel, Stainless Steel and Aluminium
- Awning Repair and Cleaning
- Full Rigging Warrant Surveys
- Fall Arrest Systems and Associated Items
- Hire Service
- Lifejacket Supply and Servicing

The Defence team is headed up by our Defence Director, who has a vast knowledge and a wealth of experience in the area from many years in the Royal Navy. Backed up by dedicated support staff in head office.



At our Lloyds Beal depot in Caerphilly, we specialise in the manufacture of products for the aviation industry, including custom made lifting & jacking equipment to customer specific requirements.

Working in conjunction with a major MRO facility in the UK, we were tasked with manufacturing a complete set of load cell jacks enabling the stress jacking of a 747-400 aircraft. This method allows a number of repairs to be carried out at any one time, thus keeping the downtime to an absolute minimum – a must in the aviation industry.

SWL set out to fully understand the needs of the customer and worked closely with the engineers and users to ensure the solution met all of their requirements. Those requirements included design, manufacture, test and the creation of a robust maintenance regime, which included annual calibration traceable to National Standards, therefore creating a complete unrivalled service.

SWL worked to extremely strict time and budget constraints and effectively managed the project from start to finish on time and within the set budget. Subsequently SWL have manufactured a second set of load cells and also undertake other beneficial works for the same customer due to their great success.

We carry out Testing, Calibration and repairs, and can help with all your Statutory LOLER and PUWER requirements.





LLOYDS
Ship Safety Services Ltd

Life Saving Appliances - Lloyds Ship Safety Services

Whatever shipping area your fleet operates in, your life saving appliances must be tested and inspected in accordance with current regulations IMO; MSC.1/Circ.1206; SOLAS Chapter III, Regulation 20 & 36.

These regulations are to ensure that annual inspection and servicing is carried out by skilled and experienced companies to ensure that this vital equipment is maintained to the highest standards.

The governance of the rules is overseen by a classification society, and you can be sure of compliance as this division is approved by the Bureau Veritas Classification Society as an 'Approved Independent Service Provider'.

Lloyds Ship Safety Services Ltd, the operating division of SWL who carry out this work have teams of fully trained engineers to carry out both the annual and 5 year servicing and 5 year proof load tests in accordance with MSN 1803 (M).

The 5 year proof load testing is carried out using specialist equipment in the form of water bags and the load verified using calibrated flow track meters or Load cells.

To minimise disruption to your trading and operational activities we can supply riding squads whilst your vessels are in service.

SWL believe that by adding this service to our portfolio to compliment our existing Marine Division activities, makes us truly unique in the marketplace to ensure our partners remain compliant with all marine related legislation.



DILLON

Force Measurement Equipment

Dillon are a leading global manufacturer of force measurement and tensioning devices and support SWL as an approved distributor for the brand. Dillon has a comprehensive range of force measurement devices which are sold into a wide variety of markets worldwide including lifting applications, telecommunications, aviation, military, public utilities and lift maintenance.

Mechanical Dynamometers

Originally designed to measure the tension on telephone wires, the Dynamometer has proven to have limitless versatility as a tension and weight measuring instrument. It is used for such diverse jobs as suspended weighing; mounting cables for bridges; adjusting tension on guy wires; field testing chain, rope, wire—anything requiring precision force or tension measurement. Dillon is the leader in dynamometers with the largest installed population throughout the world. The sturdy design, top grade components and premium coatings make it last for years in severe environments and applications: the pounding aboard military vehicles, rough handling in field measurements and even use underwater¹. Embraced by industrial contractors across the globe, we are confident the AP will satisfy your most demanding applications.



Electronic Dynamometers/Load Links

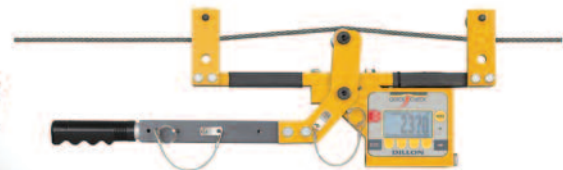
When you have people working around high tension cables and massive loads, there is no room for error. You have to have complete confidence in the strength and the accuracy of your measurement tools. Since 1937, Dillon Dynamometers have been chosen for the jobs where only the best will do. Now, Dillon has once again lifted the performance bar and set the standard for others to follow.

Two ED Series models are available: The high-end ED Xtreme (also called EDX), and the affordable EDjunior. Choose ED Xtreme for the most demanding applications; ED Xtreme is built with the best materials and designed with cutting-edge features like radio control. Where cost is a concern, and reliability is a requirement, choose EDjunior – the perfect crane scale for simple jobs.



Tension Meters

The Dillon Quick-Check Tension Meter quickly measures tension tower and stack guy wires, pretensioned cable barriers, bridges, elevators, winch rope, overhead electric transit wires, fall arrest systems, aircraft cables and utilities. It installs, measures and removes in seconds. The digital loadcell is highly accurate and requires no lookup or correction tables. The operator can quickly select from 20 different wire sizes and types stored in Quick-Check's memory. The Check-Tensioning mode graphically displays the current and target tensions for extremely quick setting of line tension. Even the infrequent battery changes are quick.



SWL Rope Lifting & Testing Ltd offer inspection and testing services at all of our depots throughout the country ranging from in-house testing on our tensile and compression test machines to the on-site testing of all types of lifting / pulling appliances and accessories.

We use a wide range of methods to carry out these tests, using anything from Calibrated Weight, Water Bags and Hydraulics.

SWL Rope Lifting & Testing Ltd can provide periodic thorough examinations which comply with LOLER 1998 Regulations. These can be carried out for a broad range of equipment, such as: Cranes, Hoists, Loose Lifting Equipment, A-Frames, Hydraulics, Fork Lift Trucks and Lorry Mounted Cranes.

We offer certification services, via our on-line Motion Inspect Program, that can ensure that plant registers and documents are kept up-to-date and meet all legal obligations. Details of defective items are recorded and are available via our Motion Inspect Program in an easy-to-view format enabling customers to take corrective action and ensure ongoing equipment compliance.

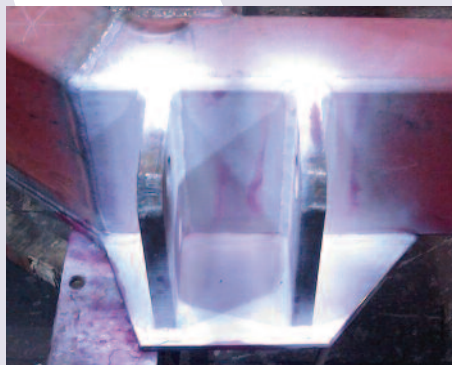
We can also set up colour code schemes which promotes safe practice in the workplace.



Destructive and Non-Destructive Testing

Destructive testing is where samples are subjected to different loads and stress, which enables us to determine at which point that the material eventually yields and cracks. The results gained are then compared to regulations and/or quality guidelines.

Destructive tests are best when used together with our non-destructive methods: this combination gives the best information on materials and welds. Non-destructive tests show if cracks, corrosion or other faults exist. Destructive tests in turn indicate how and when the objects are in danger of breaking down or failing.



SWL Rope Lifting & Testing Ltd, offer a wide range of mooring, and fibre ropes in polyester and nylon etc. We produce mooring lines as per your requirements, and specific to your application needs, i.e strength, abrasion resistance, low stretch etc.



DYNEEMA (UHMPE) Mooring Ropes

Marlow D12 Plus is a Premium and versatile all round fibre rope, offering a lightweight, high strength and flexible alternative to steel wire ropes and polyester ropes. Available in diameters up to 120mm. With Minimum Break Loads up to 835 Tonnes, complete with Marlows standard Armourcoat Protective finish. It is soft and flexible for easy handling and stowage. Nylon springs can be spliced into the assembly for improved elasticity.

Advantages of using Dyneema:

- 7 Times lighter than equivalent wire size
- Higher strength on a size / strength ratio compared to alternative ropes
- Easy to handle
- Minimal wear on deck gear
- Low maintenance
- Lightweight, meaning easy handling and quick deployment when compared with traditional Polyolefin, nylon, polyester or wire.
- Mooring can be quick and secure with minimum personnel

Marlow®

Benefits of UHMPE ropes in towing applications:

- High strength – meets the increasing demands of today's towing environment
- Light weight – easily handled, increasing ease and speed of connection to towed vessel
- Positive buoyancy – rope floats meaning easy transfer in emergency situations
- Increased safety – very low extension and consequently limited / no recoil on failure



Crane Maintenance

SWL have a dedicated crane division who are able to offer a comprehensive service for all types and manufactures of cranes and powered lifting equipment.

From maintaining and repair of existing equipment, to installation of both new and reconditioned cranes.

Installation

As an independent company we are able to source the crane or swing jib that is most suited to your individual requirements and budget.

SWL are in a position to specify, design, supply, install, and commission on complete turn key basis.

Preventative Maintenance Contracts

For preventative maintenance, we offer Service and breakdown contracts to suit the customers' requirements based upon both usage and age of your equipment.

For our maintenance contract customers we offer a call out service in the event of a breakdown. SWL appreciate the importance and the impact upon your business that this can cause, and aim to react to your call within 2 hours

Modernisation

With a wealth of experience and technical knowledge our team can offer advice and solutions to upgrade your existing equipment.

Swing Jibs, Gantry Cranes, Runway Beams, if you are interested in a no obligation site survey, please call to discuss your requirements.





We hold a substantial height safety product range in stock including a range of Harnesses, Lanyards, Belts, Self Retracting Fall Arrest Devices and Tripods.

We are on hand to offer expert advice on any height safety issue that you may have.

We can Inspect and recertify your in service equipment either on site or at our workshop, and aim to keep you operational, safe and legal.

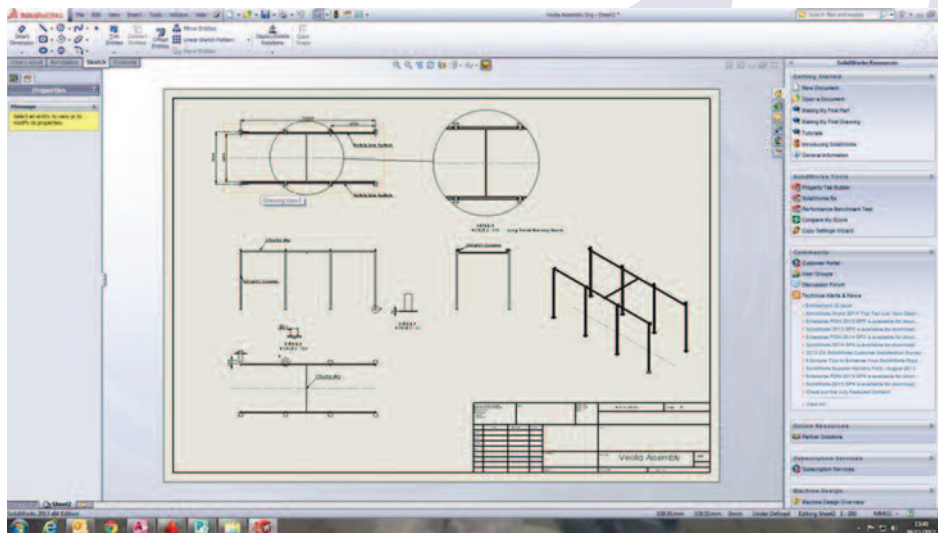
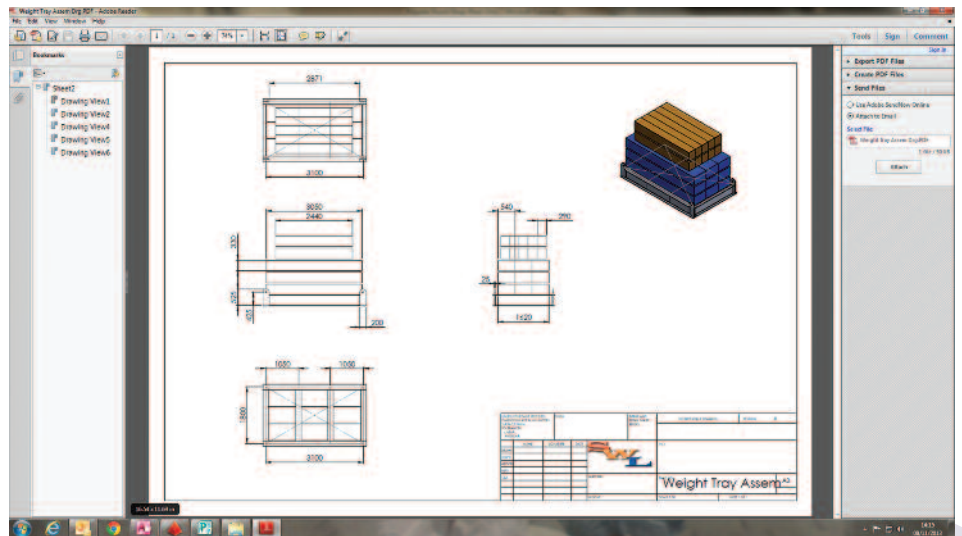
SWL Rope Lifting & Testing Ltd is an Indispensable partner for your height safety requirements.

We are approved Installers of various market leading permanent Lifeline systems, both Horizontal and vertical, including Sala LadSafe Vertical system, Tractel Travsafe & Travsmart Systems, Checkmate Checkline System, and we are proud to announce that we have recently been appointed as approved installers for the Soter Horizontal Fall Arrest and Restraint System.



Design and Manufacture

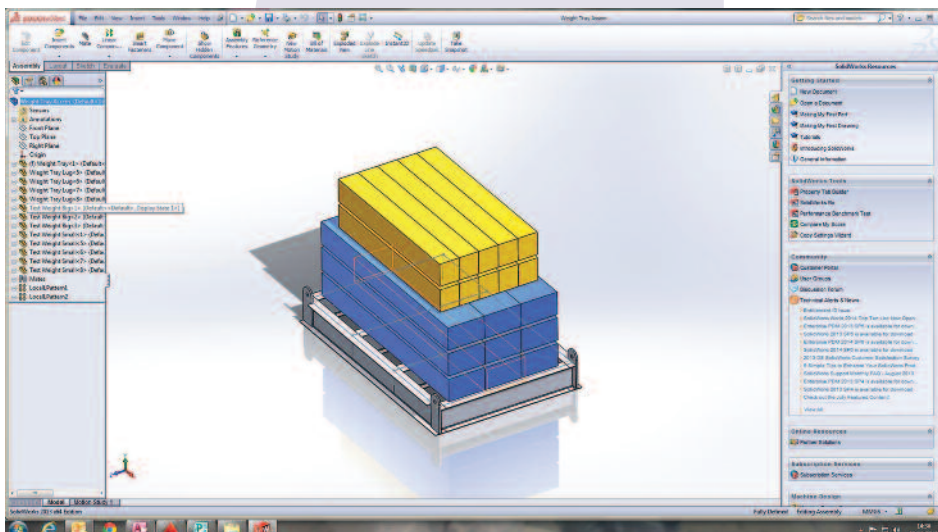
The design and manufacturing department based at our Head Office in Southampton allows us to offer our customers solutions to any unusual problems. Using our vast Technical Knowledge and expertise in the lifting equipment industry we can work in partnership and design a product specific to your requirements.



We can design and manufacture as per your requirements, from the smallest of components to lifting beams, spreaders and complete design, manufacture and installation of crane systems.

Your designed product can be viewed as a 3D model over e-mail or on any tablet, with the simple download of a free online program.

Designed with



Industrial Racking


All industrial racking is covered by PUWER 1998, and also the Storage Equipment Manufacturers Association (SEMA) guidelines. SWL carry out load testing as required, and also the annual inspection of these items.

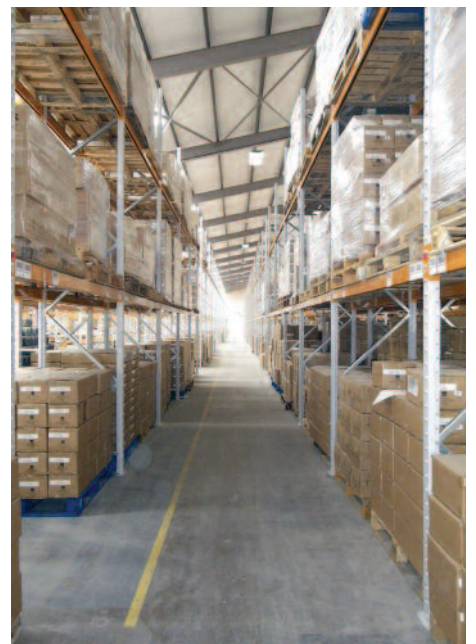
As part of our examination we check all fixings, vehicle protection barriers, and for damage to the structure.

All racking after examination is marked by our tag system, to show that it has passed inspection and is safe to use. These details are recorded and kept on our 'Sure Cert' system.

Any defects are reported immediately to our client before we leave site, and marked as do not use.

It is vital that any damage to the structure of racking systems are reported immediately, for further investigation as it is possible that the structure, even after what appears minor damage, can result in catastrophic failure.

| | |
|---|--|
|  SWL Rope Lifting & Testing Ltd Tel: 02380 338286 | |
| INDUSTRIAL RACKING TESTED / INSPECTED TO PUWER 1998 & SEMA GUIDELINES | |
| I.D | |
| SWL per shelf | |
| Date of Inspection | |
| Date of Inspection | |
| Date of Inspection | |
| Date of Inspection | |
| <small>TEL: +44(0)1403 881 4020 www.scottag.co.uk © Copyright Brady Corp. Ltd 2013 www.bradycorp.com</small> | |
| <small>ESTD 1967</small> | |



Industrial Doors

Like all work equipment Industrial Doors are covered by Provision and Use of Work Equipment Regulations 1998 (PUWER 1998), SWL are able to carry out the statutory inspection and maintenance of common use doors powered and manual Roller Shutter, Concertina and Sectional Overhead doors.

As part of our standard service visit, all parts are checked for correct operation. Any minor adjustments or repairs that can be carried out with an engineer's typical travelling tool kit are done without the need for return visit.

Where repairs and adjustments are required SWL can obtain all necessary spares and replacements to return your door to correct operation, and are always quoted prior to any additional works being carried out.

Our clients are also covered by a "call out" service in the event of a breakdown, where we aim to respond within 2 hours of the call.



Wire Rope



Wire Rope

We stock from 3mm up to 42mm in various constructions including 1x19, 7x7, 6x19, 7x19, x36, 19x7 and 35x7 in both Fibre Core and Steel Cores.



Rope Assemblies

We manufacture wire rope assemblies for a wide variety of applications. All assemblies are manufactured in house at our South Wales Depot by our fully trained engineers with each assembly being supplied with full traceability and Test certificates.



Stainless Steel Rope and Assemblies

We also offer wire and wire rope assemblies in stainless steel, for marine and industrial applications. We have the facility to manufacture wires on site using our portable Talurit press and roll swage machines.



7 x 7 (6/1) Wire Strand Core

| Size (mm) | Approximate Mass (kg/m) | Minimum Breaking Load (kN) |
|-----------|-------------------------|----------------------------|
| 2 | 0.015 | 2.54 |
| 3 | 0.034 | 5.72 |
| 4 | 0.061 | 10.2 |
| 5 | 0.095 | 15.9 |
| 6 | 0.137 | 22.9 |

6 x 19 (12/6/1) Fibre Core

| Size (mm) | Approximate Mass (kg/m) | Minimum Breaking Load (kN) |
|-----------|-------------------------|----------------------------|
| 3 | 0.055 | 4.89 |
| 4 | 0.086 | 8.69 |
| 5 | 0.125 | 13.6 |
| 6 | 0.177 | 19.6 |
| 7 | 0.331 | 26.6 |
| 8 | 0.416 | 34.8 |
| 9 | 0.482 | 44.1 |
| 10 | 0.560 | 54.4 |
| 11 | 0.674 | 65.8 |
| 13 | 1.090 | 91.9 |
| 14 | 1.300 | 107 |
| 16 | 1.600 | 139 |

7 x 19 (12/6/1) Wire Strand Core

| Size (mm) | Approximate Mass (kg/m) | Minimum Breaking Load (kN) |
|-----------|-------------------------|----------------------------|
| 3 | 0.038 | 5.77 |
| 4 | 0.059 | 10.2 |
| 5 | 0.092 | 16.0 |
| 6 | 0.134 | 23.1 |
| 7 | 0.182 | 31.4 |
| 8 | 0.243 | 37.6 |
| 9 | 0.308 | 47.6 |
| 10 | 0.379 | 58.8 |
| 11 | 0.466 | 71.7 |
| 12 | 0.578 | 84.6 |
| 13 | 0.636 | 99.3 |
| 14 | 0.768 | 115 |
| 16 | 0.964 | 150 |

19X7 (6/1) Non Rotating

| Size (mm) | Approximate Mass (kg/m) | Minimum Breaking Load (kN) |
|-----------|-------------------------|----------------------------|
| 12 | 0.575 | 84 |
| 13 | 0.659 | 98 |
| 14 | 0.756 | 114 |
| 15 | 0.890 | 131 |
| 16 | 1.020 | 149 |
| 17 | 1.150 | 168 |
| 18 | 1.310 | 189 |
| 19 | 1.450 | 210 |
| 20 | 1.600 | 233 |
| 22 | 1.930 | 282 |
| 24 | 2.280 | 335 |
| 25 | 2.510 | 364 |
| 26 | 2.710 | 394 |

6X36 (14/7+7/7/1) IWRC

| Size (mm) | Approximate Mass (kg/m) | Minimum Breaking Load (kN) |
|-----------|-------------------------|----------------------------|
| 13 | 0.674 | 107 |
| 14 | 0.802 | 128 |
| 15 | 0.901 | 143 |
| 16 | 1.030 | 165 |
| 18 | 1.340 | 212 |
| 19 | 1.500 | 237 |
| 20 | 1.640 | 259 |
| 22 | 1.950 | 314 |
| 24 | 2.340 | 375 |
| 25 | 2.480 | 396 |
| 26 | 2.740 | 433 |
| 28 | 3.160 | 508 |
| 29 | 3.350 | 544 |
| 30 | 3.600 | 581 |
| 31 | 3.850 | 616 |
| 32 | 4.100 | 658 |
| 33 | 4.390 | 702 |
| 34 | 4.620 | 740 |
| 35 | 4.980 | 794 |
| 36 | 5.160 | 830 |
| 37 | 5.520 | 884 |
| 38 | 5.780 | 933 |
| 39 | 6.180 | 986 |
| 40 | 6.420 | 1035 |
| 41 | 6.770 | 1081 |
| 42 | 7.120 | 1138 |
| 43 | 7.490 | 1170 |
| 44 | 7.830 | 1230 |
| 46 | 8.640 | 1387 |
| 48 | 9.320 | 1454 |
| 50 | 10.20 | 1590 |
| 52 | 11.06 | 1715 |

35X7 (6/1) Non Rotating

| Size (mm) | Approximate Mass (kg/m) | Minimum Breaking Load (kN) |
|-----------|-------------------------|----------------------------|
| 12 | 0.625 | 92 |
| 13 | 0.771 | 108 |
| 14 | 0.885 | 125 |
| 15 | 1.000 | 143 |
| 16 | 1.150 | 163 |
| 18 | 1.440 | 206 |
| 20 | 1.810 | 255 |
| 22 | 2.200 | 308 |
| 24 | 2.600 | 367 |
| 26 | 3.100 | 431 |
| 28 | 3.600 | 500 |
| 30 | 3.970 | 573 |



Some examples of Lifting Equipment we supply.

If you don't see what you are looking for please give us a call on 02380 338 286 or email sales@swl.org.uk

We hold a substantial stock of Lifting, Lashing, pulling, jacking and height safety equipment at all of our depots throughout the UK.

Round Slings



Webbing Slings



Plate Clamps



Chain Slings



Lifting Points



Hydraulics



Shackles



Chain Blocks and Lever Hoists



Powered Hoists



Fall Arrest



Height Safety



Hire at SWL

SWL have a highly experienced team with over 20 years experience to help and advise with your lifting equipment needs. We hold an extensive stock of Hire Equipment ranging from:

- Webbing, Wire Rope and Chain Slings
- Lever Hoists and Chain Blocks
- Genie Lifts, Tirfors
- Calibrated Test Weights
- Hydraulics
- Spreader Beams and Portable Gantry Frames

These are to name a few of the items we stock in our various depots throughout the country. All lifting equipment items come fully inspected and certified ready for use and can be delivered the same day if local, next day throughout the UK.

For information on any items please contact us.

Trollies



Tirfors



Load Cells



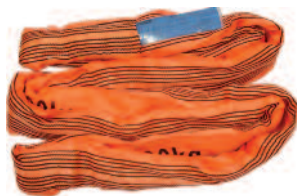
Gantries



Weight



Slings



Skates



Hydraulics



Genie Lifts



Chain Blocks



Hoists



SWL are approved by Lifting Equipment Engineers Association (LEEA) as an Accredited Training Company.

We are constantly updating our training courses, both accredited and tailored.

However, below are our most popular.

Lifting and Slings

Duration: 3 days

The specific aim of this course is to provide delegates with safe techniques for slinging, lifting operations and to act as a Slinger/Banksman.

Although a basic course the content is quite considerable and covers the following areas:

- Current Legislation
- Safety Margins
- Sling Angles and Configurations
- Load Estimation
- Rules for Safe Lifting
- Crane Signals
- Equipment Selection
- Safe Use and Pre-Use Inspection of Lifting Equipment

Each delegate will be expected to complete a Theoretical Examination and Practical Assessment to ensure safe practices are used. A LEEA Approved certificate will be issued on successful completion of course, examination and assessment. These aid in addressing the various legislative requirements that are placed upon employers to ensure their employees are deemed competent.

Working at Height

Duration: 1.5 days

The specific aim of this course is to provide delegates with safe techniques and Knowledge of Working at Height Regulation (WAHR) 2005 and as amended in 2007 & the safe use of Height Safety Equipment.

Although a basic course the content is quite considerable and covers the following areas:

- Working at Height Regulation
- Current Legislation effecting WAHR
- Working at Height Risk Assessments
- Rescue Plans
- Collective & Personal Equipment
- Ladders
- Safety Harness
- Lanyards
- Fall Arrest Systems
- Pre and Post-Use Inspections
- Correct fitting of Safety Harness

Each delegate will be expected to complete a Theoretical Examination and Practical Assessment to ensure safe practices are used. A LEEA Approved certificate will be issued on successful completion of course, examination and assessment. These aid in addressing the various legislative requirements that are placed upon employers to ensure their employees are deemed competent.

Electric Overhead Travelling Crane

Duration: 3 Days

Operation and Slinging

The specific aim of this course is to provide delegates with safe techniques for slinging, lifting operations, when using an Overhead Crane and to act as an Operator & Slinger.

Although a basic course the content is quite considerable and covers the following areas:

- Current Legislation
- Safety Margins
- Sling Angles and Configurations
- Load Estimation
- Rules for Safe Lifting
- Crane Signals
- Pendant Control
- Equipment Selection
- Safe Use and Pre-Use Inspection of Lifting Equipment

Each delegate will be expected to complete a Theoretical Examination and Practical Assessment to ensure safe practices are used. A LEEA Approved certificate will be issued on successful completion of course, examination and assessment. These aid in addressing the various legislative requirements that are placed upon employers to ensure their employees are deemed competent.

The following courses will be added to our LEEA Accredited course portfolio in the near future:

- Appointed Person
- LOLER & PUWER Awareness
- Management of Lifting and Slinging
- Managing Working at Height
- Forklift Truck Operation

Our courses are designed to be held at our customer's premises, if adequate facilities are available, however, if there is a requirement we are able to utilise SWL Group sites throughout the country.

SWL Training Services can offer bespoke training courses to be tailored to suit your specific needs. For further information or to discuss your requirements in more detail please contact our Training Manager on 01752 421 124 or our Head Office; 02380 338 286.

Locations

Newport Depot

Lloyds Beal

Unit 8, Premier Buildings
Old Newport Road
Bedwas, Caerphilly
CF83 8YE

T: 02921 670 222

F: 02920 884 487

E: southwales@swl.org.uk

Plymouth Depot

SWL Rope Lifting & Testing Limited

Unit 2, River Court
Kingsmill Road
Tamar View Industrial Estate
Saltash, Cornwall
PL12 6LD

T: 01752 421 142

F: 01752 849 275

E: plymouth@swl.org.uk



Southampton Depot

SWL Rope Lifting & Testing Limited

65-69 Bernard Street
Southampton
SO14 3BA

T: 02380 338 286

F: 02380 338 288

E: sales@swl.org.uk

Poole Depot

SWL Rope Lifting & Testing Limited

75 Nuffield Road
Nuffield Industrial Estate
Poole
BH17 0RR

T: 01202 977 067

F: 01202 660 033

E: poole@swl.org.uk

Portsmouth Depot

SWL Rope Lifting & Testing Limited

HM Naval Base
Building 2/019
Victoria Road
Portsmouth
Hampshire
PO1 3NJ

T: 02392 007 999

F: 02392 738 956

E: portsmouth@swl.org.uk

Please Note: this is our
Popular Product Catalogue, for
any other enquiries not found
please contact us.